

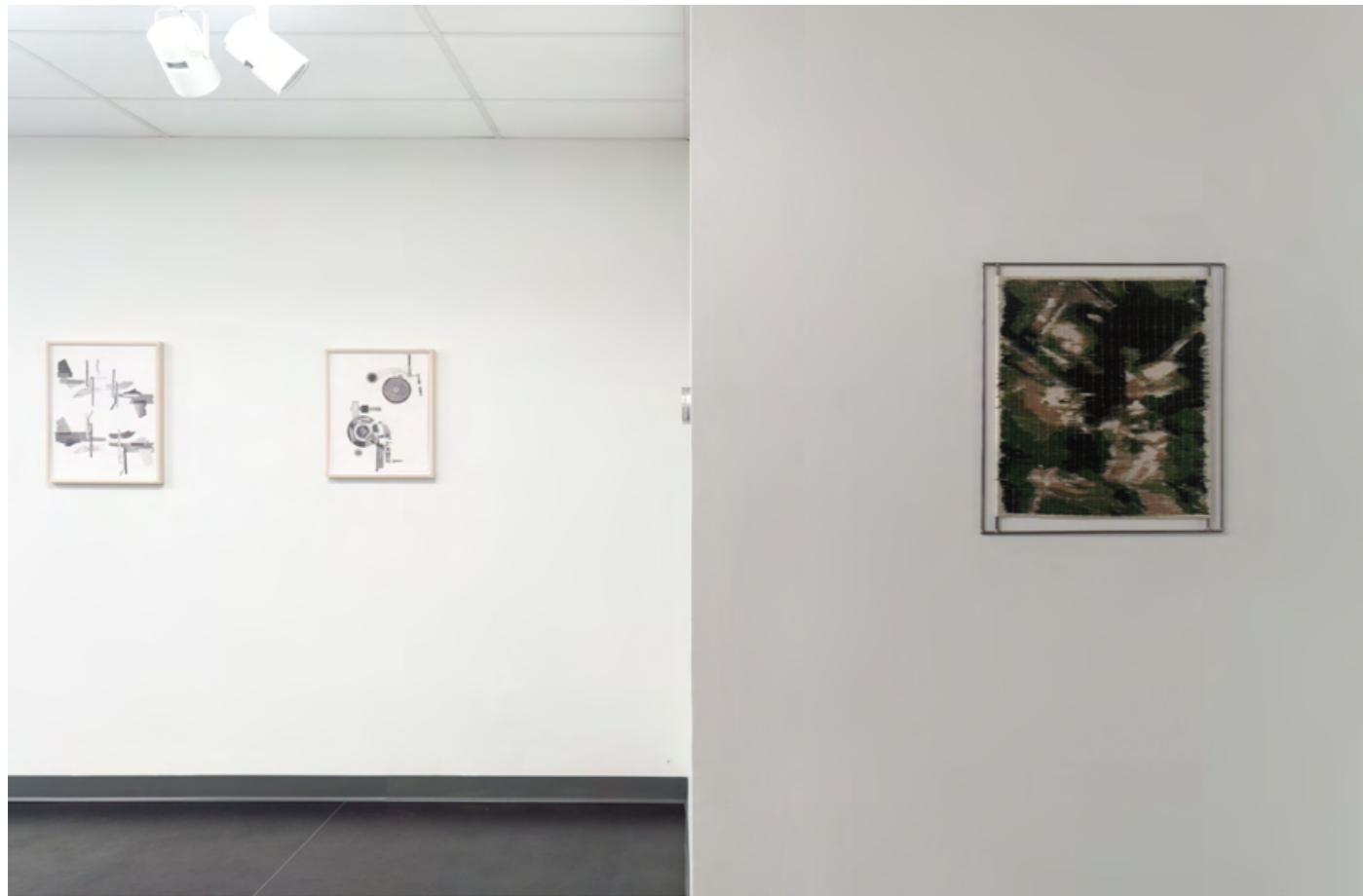
# Abbey Muza Portfolio



*Knurled Ribber Arm, 2025*  
silk, cotton, sewing thread, dye, welded steel  
23 x 20 inches



*Electric Stop Motion, 2025*  
silk, cotton, sewing thread, dye, welded steel  
23 x 19.5 inches



*Apprentice*, 2025  
exhibition image  
Penn State Berks Freyberger Gallery

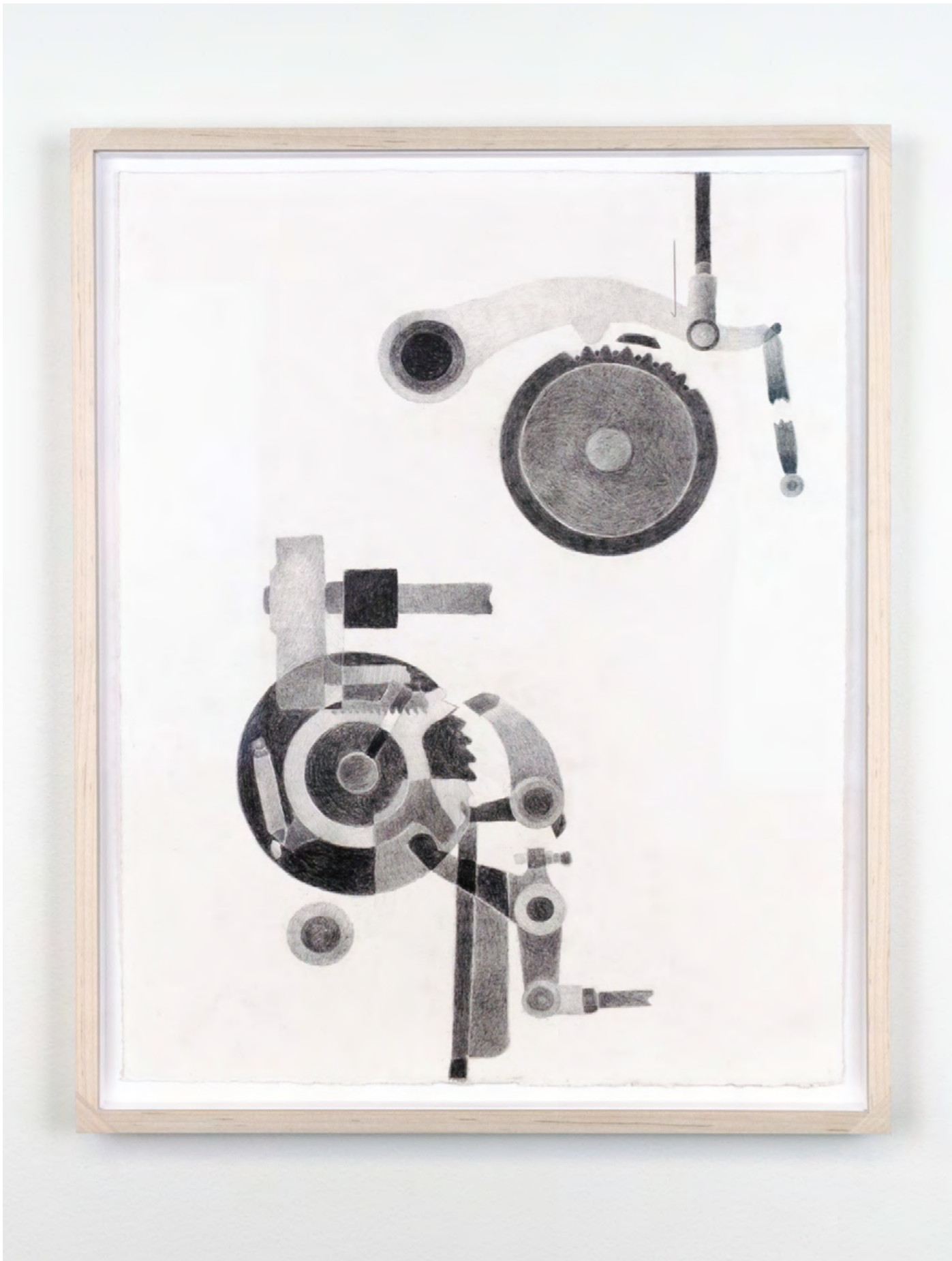


*Narrowing Shaft*, 2025  
graphite on paper  
21.5 x 15.5 inches

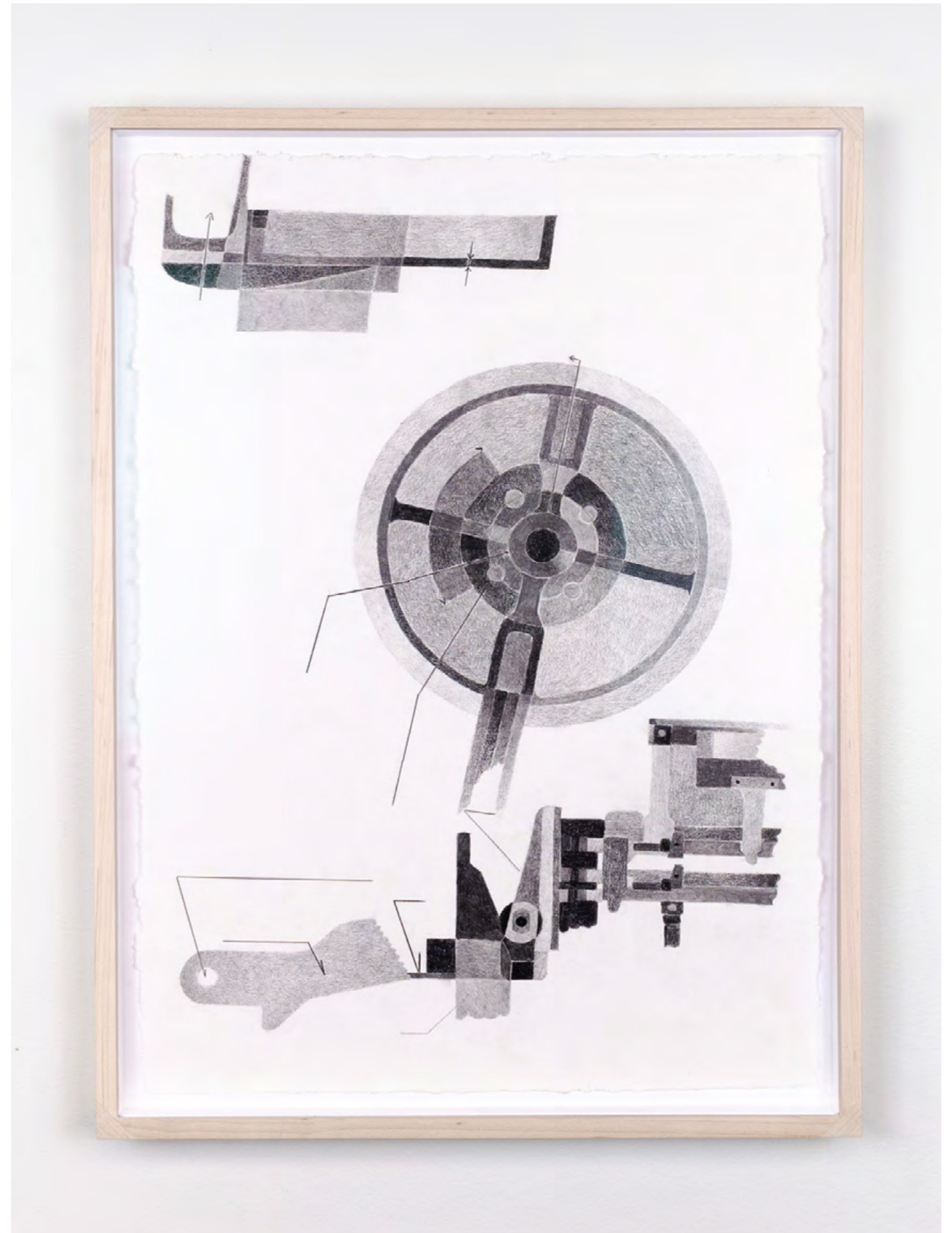
(left) *Tension Wheel*, 2025  
machined aluminum  
4 x 4 inches



*Apprentice*, 2025  
exhibition image  
Penn State Berks Freyberger Gallery



*Modified Lace Clock*, 2025  
graphite on paper  
19.5 x 15.5 inches



*Eccentric Stud Segment*, 2025  
graphite on paper  
21.5 x 15.5 inches



*La langue, les lèvres, two waves, enclosure, 2024*  
silk, wool, cotton, dye, sewing thread, linen, colored pencil  
42 x 25 inches



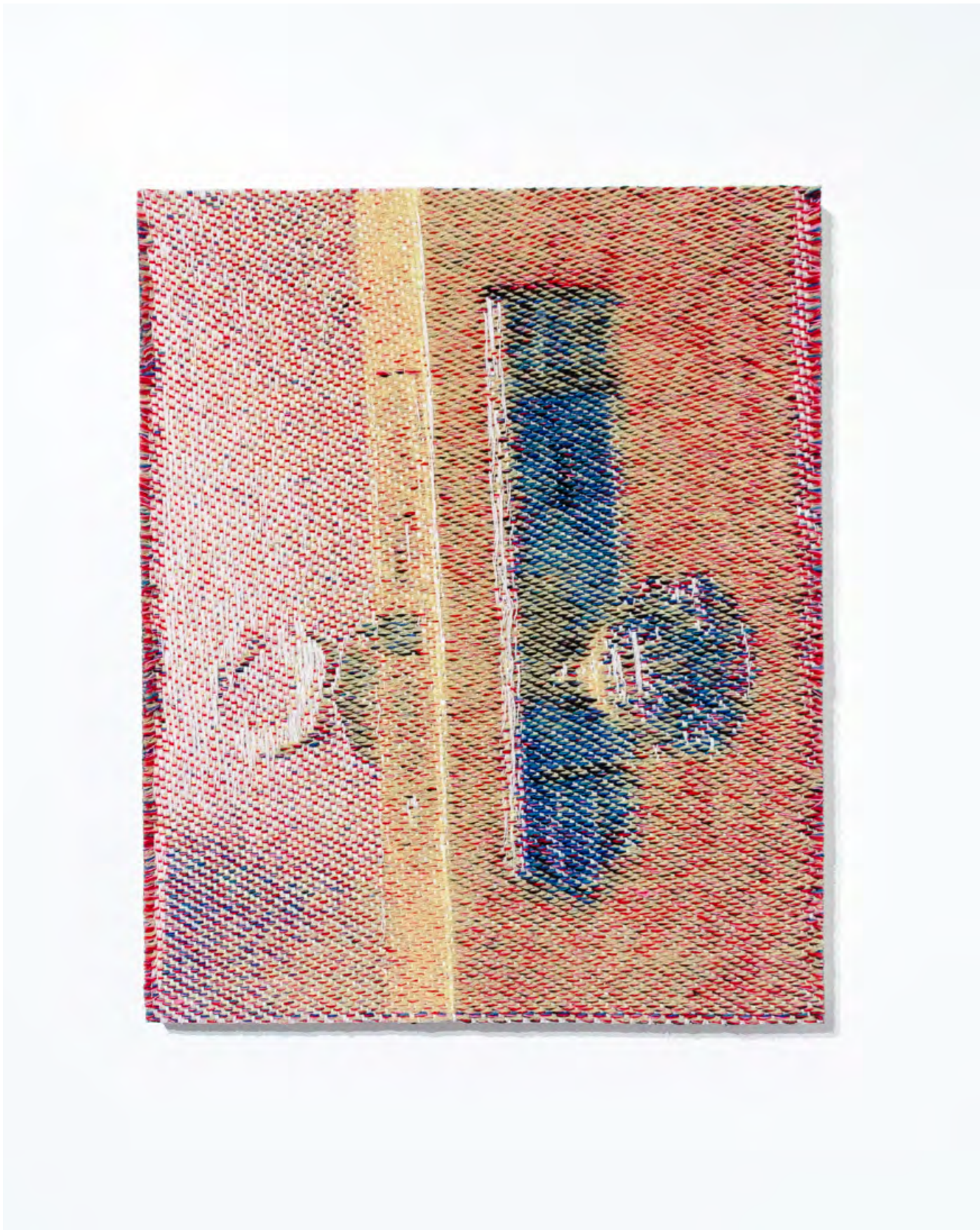
*Le cou, la gorge, s-curve, interior view, 2024*  
silk, wool, cotton, dye, sewing thread, linen, colored pencil  
41 x 25 inches



L: *The collarbones, the jaw*; R: *The freckles, the knuckles*, 2024  
exhibition image, Murmur  
Fondation des Etats-Unis, Paris



*Réciter son corps*, 2023  
exhibition image  
*Slow Dance*, Chicago



*Two minds [ doublecherry], 2023*  
wool and cotton handwoven jacquard, organza, gesso on panel  
20 x 15.75 inches



*Le corps à corps, 2023*  
colored pencil on paper on panel  
11 x 14 inches



*Les paumes les yeux, 2023*  
colored pencil on paper on panel  
11 x 14 inches



*The fluid the fluxes the foam, 2023*  
colored pencil on paper on panel  
11 x 14 inches



*Réciter son corps*, 2023  
exhibition image  
*Slow Dance*, Chicago

*Réciter le corps de l'autre*, 2023  
wool and cotton handwoven jacquard, linen, acrylic  
51.5 x 37 inches



*Fragments*, 2023  
exhibition image  
Fondation des Etats-Unis, Paris



*Réciter son corps*, 2023  
viscose, wool, and cotton handwoven jacquard, linen, acrylic  
55.5 x 31.5 inches



L: *Divine and Darling*; R: *Inversions devient Urania*, 2022  
silk, wool, cotton, organza, enamel, wood  
L: 67 x 26 inches; R: 82 x 26 inches



*A blush, a flush, a fever, a command*, 2022  
exhibition image  
Temple Contemporary, Philadelphia